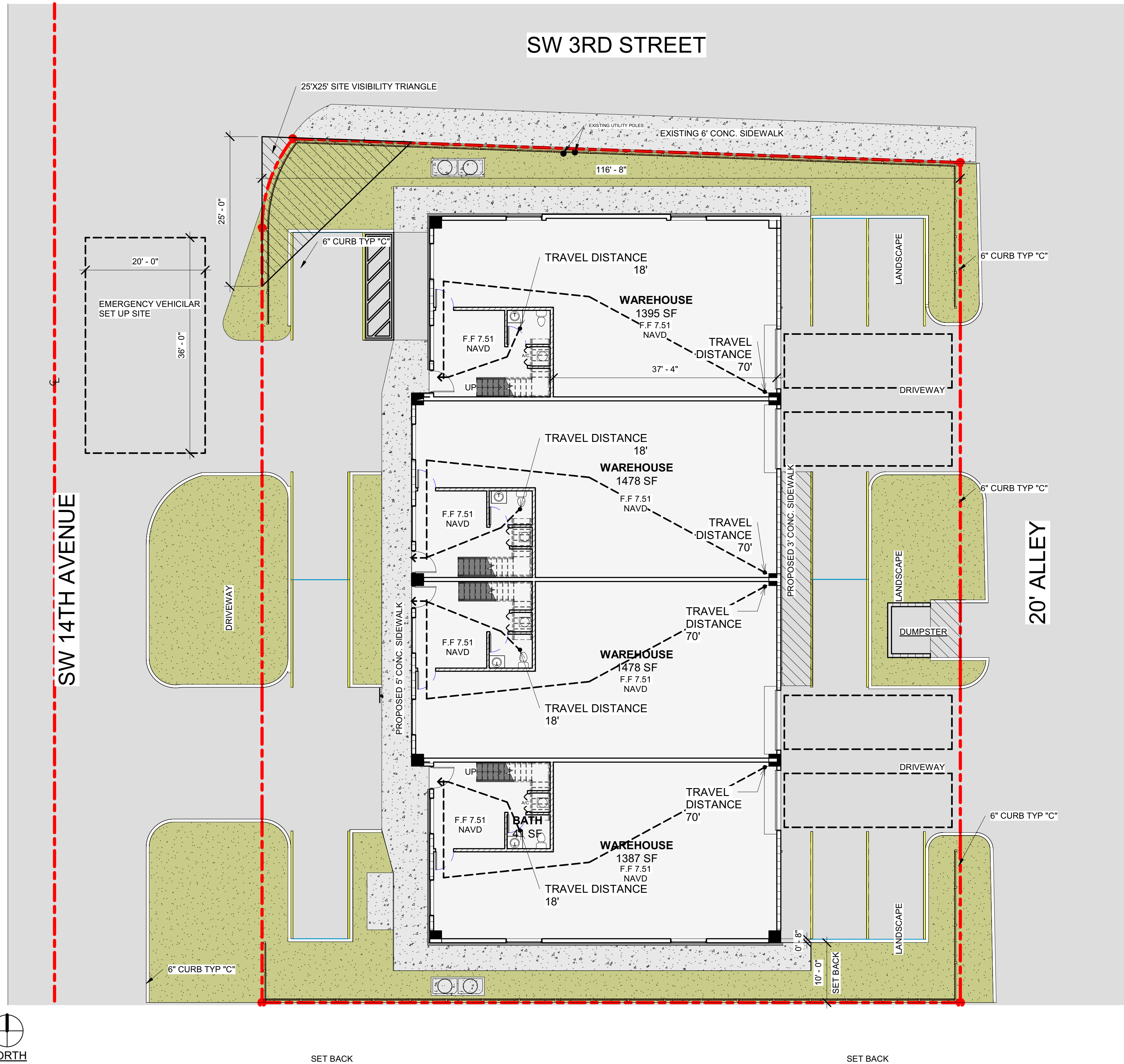


Revision		
REV	DATE	BY



1 LIFE SAFETY CONNECTION PLAN  
3/32" = 1'-0"

CODE SAFETY NOTES				
OCCUPANCY GROUP		MAX. TRAVEL DIST.	MAX. DEAD END	COMMON PATH OF TRAVEL
		SPRINKLERED		
9600 S.F./200 OCC.	REQUIRED	200'	50 FT.	50 FT.
	PROVIDED	50'-10"	-	0'-0"
EGRESS PATTERN AND WALL LAYOUT DOES NOT EXCEED: A) THE MAX TRAVEL DISTANCE B) NO DEAD END TRAVEL EXCESS OF 20 FT C) COMMON PATH OF TRAVEL DOES NOT EXCEED 5 FT				
FINISH CLASSIFICATION PER BY OCCUPANCY AS PER FBC-B-803.9 PROPOSED BUILDING IS SPRINKLERED: A) INTERIOR EXIST STAIRWAYS, RAMPS & PASSAGEWAYS- "C" B) CORRIDORS & ENCLOSURE FOR EXIT ACCESS STAIRWAYS & RAMPS- "C" C) ROOMS AND ENCLOSED SPACES- "C"				
WORK PERFORMED SHALL COMPLY WITH THE FLORIDA BUILDING CODE 2020-7TH. EDITION- BUILDING, FLORIDA FIRE PREVENTION CODE 2020-7TH. EDITION, FLORIDA BUILDING CODE- ACCESSIBILITY, NFPA 18101, 2018 EDITION,NFPA 13&13R NATIONAL ELECTRICAL CODE.				

PROPOSED WAREHOUSE FOR:  
REGANZANI GROUP LLC  
VACANT PROPERTY, SW 3RD STREET,  
POMPANO BEACH, FL, 33069

SEAL: AR 0017852  
Luis La Rosa  
Digitally signed by Luis La Rosa  
Date: 2024.06.12 16:25:50 -04'00'

DRAWN:	A.G.
CHECKED:	L.L.R.
DATE:	11/07/2023
SCALE:	AS NOTED
JOB. NO.:	023-042
SHEET:	
A 1.5	
OF:	SHEETS:

100% CONSTRUCTION DOCUMENTS